



Reatta Reatta XL

WHAT'S NEW MY23

3/14/22

- A five-inch LED diagnostics and operational status screen is now in service bay for the Aqua-hot 250D hydronic heating system (Reatta XL only)
- Driver and passenger seats with integrated 3-point seatbelt with a hard bottom skirt on this seat covering up the black seat pedestal (Reatta only)
- Three new decors – Glacier, Valley & Summit
- New faux leather on furniture, dinettes and driver and passenger seats
- Added power recline to driver and passenger seats
- New fabrics on valances, bedspread, pillows and headboard
- Two woodgrain porcelain tiles
 - Tacoma Shadow matches the Stonewall and Linen cabinets
 - Harvest Wheat complements the Almond and Auburn cabinets
- Powered theater seating is standard (optional in 39BH).
- Stylish bedroom headboard
- Fantastic ceiling vent now in linen wood frame to match the ceiling
- Changed the fabric on the bunk mat material from Hubbard Doe to Herman Oyster
- Switched the glass hutch cabinet doors from frosted glass to rain glass
- New HVAC system from Bergstrom, a 40-year old company who is the supplier of HVAC systems to the largest school bus OEM in the nation. For model year 2023, we increased airflow and performance by the following:
 - Dash panel mode – 34% airflow gain, 72% cooling performance gain
 - Floor mode – 55% airflow gain, 225% heating performance gain
 - Defrost mode – 23% airflow gain, 97% heating performance gain
- All A/C vents have been relocated to the center of the coach. This provides much more air movement when traveling down the road with slide-outs in. Your four-legged traveling companions will love this new air climate product enhancement.



Reatta Reatta XL

WHAT'S NEW MY23

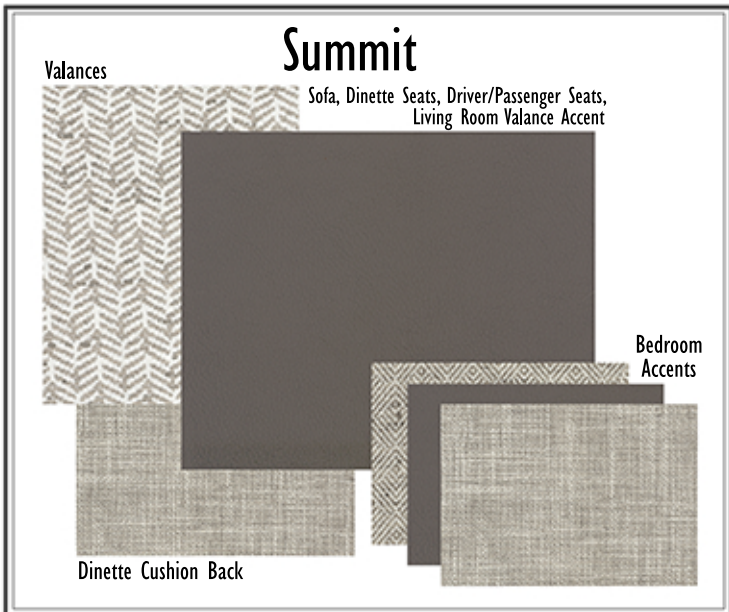
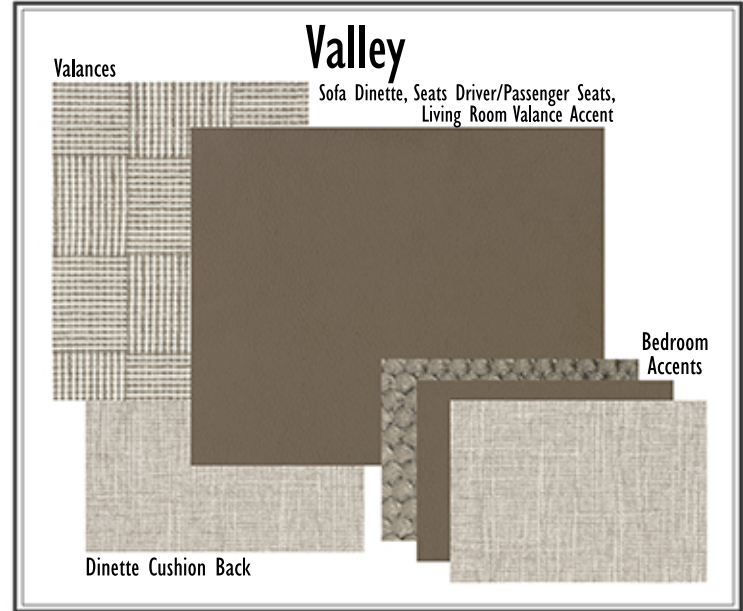
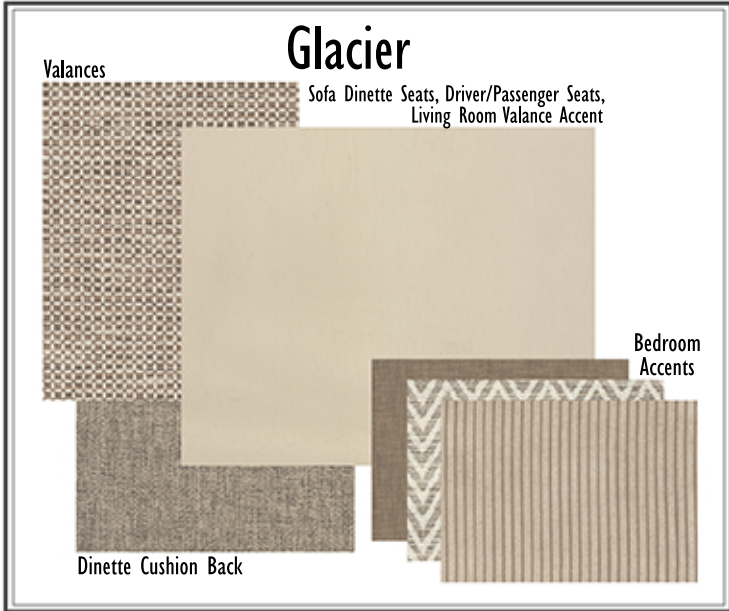
3/14/22

- The newly designed kitchen window from Lippert features “easy open and close” operation. This feature allows for much wider opening for much appreciated air flow in the kitchen.
- Interior entrance grab handles will now be black.
- Most switches in the coach will be wireless Spyder switches.
- Switched to the all-in-one Winegard Connect 2.0 4G2+ (4G LTE + Wi-Fi extender + over-the-air TV + AM/radio), for reliable, uninterrupted, in-motion and stationary coverage while traveling. Plus, it offers the capability to swap SIM cards to new or existing data plans from other carriers.
- GoPower 380W solar panel system features two powerful 190W solar panels and will charge your battery up to 30 amps per hour. The system’s operation can be viewed on the Firefly touchscreen or on the phone application.
- Eliminated the decorative driver and passenger map lights, which were not effective for their intended use. The flashlight on your phone is much more effective as a map light.
- Switched back to the 0192316 entry step from Lippert used on the 2021 models because the amount of footing space on the horizontal portion of the step is greater than the one used on the 2022 models
- Go Power 2000-watt pure sine inverter, which replaces the magnum inverter, produces an exact replica of AC power and is ideal for running any load within its wattage range.
- New Valor Gen III TPMS system is completely wireless. Now with substantial battery life of 5+ years and a stronger signal for more accurate, real-time communication between sensors, antenna and dash.
- Decorative inlay around 12” digital dash is just another little detail that adds to overall richness of the coach.
- New option: 30” x 78 ½” front overhead power-lift bunk which can handle a maximum load of 750 lbs. for sleeping in set-up mode and 115 lbs. for storage in travel mode.



ENTEGRA
COACH®

Reatta 2023 Reatta XL



Almond Maple



Auburn Maple



High-Gloss Stonewall Grey



Vintage Linen Maple



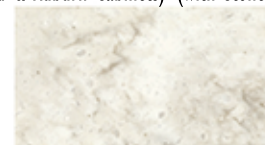
Tile Flooring
(with Almond & Auburn Cabinets)



Tile Flooring
(with Stonewall Grey & Vintage Linen Cabinets)



Wallboard Main



Solid Surface Countertops



Hutch